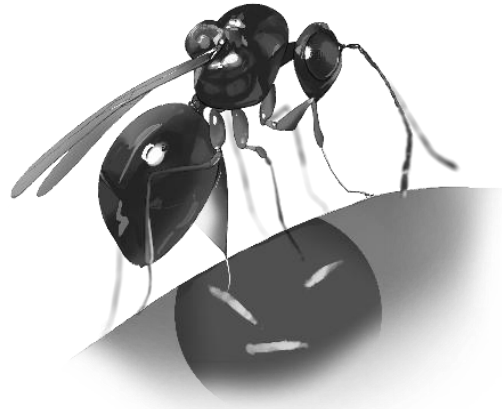


## Classical biological control of *Drosophila suzukii* in the Netherlands

The invasive spotted wing drosophila (*Drosophila suzukii*) causes major damage to fruit production. An underlying reason for this is that there are no specialized natural enemies present to regulate its populations in the Netherlands, and the species can reproduce unhindered. We are currently in the process to obtain a permit for the import and release of a co-evolved specialized natural enemy of the spotted wing drosophila from its native range, the parasitic wasp *Ganaspis kimorum*.



*Ganaspis kimorum*

We expect that the species will establish itself and specifically suppress populations of the spotted wing drosophila in Dutch landscapes. In order to make this a successful biocontrol effort, the rearing and released of the beneficial should be carried out efficiently and in a targeted way.



*Drosophila suzukii*

In this project you will get to work with a new natural enemy of the spotted wing drosophila. Depending on your preference, you can carry out your project on different activities, such as helping to set up, characterize and optimize the rearing, and participate in the field release and post-release monitoring of the beneficial.

Thesis / internship: Spring to Summer 2025

Tibor Bukovinszki, Herman Helsen

Wageningen University & Research, Field Crops / Open teelten

Email: [tibor.bukovinszki@wur.nl](mailto:tibor.bukovinszki@wur.nl); [herman.helsen@wur.nl](mailto:herman.helsen@wur.nl)